

OUR CLIENTS

Gegah Optima Resources Sdn Bhd
PT Alhasanie
PT Artha Nusantara Mining
PT Atlas Resources
PT Bara Mutiara Prima
PT Batubara Duaribu Abadi
PT Batubara Energy Indonesia
PT Bhumi Rantau Energy
PT Bukit Asam
PT Duta Dharma Utama
PT Inasia Tambang Jaya
PT Insani Bara Perkasa
PT Jien Coalindo Dinamika
PT Kaltim Mineral
PT Mandiri Inti Perkasa
PT Mifa Bersaudara
PT Mitrada Selaras
PT Muara Alam Sejahtera
PT Oktasan Baruna Persada
PT Param Mitra Coal
PT Pesona Khatulistiwa
PT Putra Tambang Indonesia
PT Riau Bara Harum
PT Santan Batubara
PT Sarana Cipta Gemilang
PT Sebuku Tanjung Coal
PT Surya Dinamika Lestari
PT Tabalong Prima Resources
PT Titan Mining Indonesia
PT Triaryani



BRITMINDO GROUP

Professional Mining Services

www.britmindo.com

JAKARTA

Graha Britmindo

Jl. Taman Margasatwa Raya No. 14, Ragunan

Jakarta Selatan 12550, Indonesia

Tel. +62 21 7884 9999 (hunTING)

Fax. +62 21 7884 9998

Email: bm_jakarta@britmindo.com

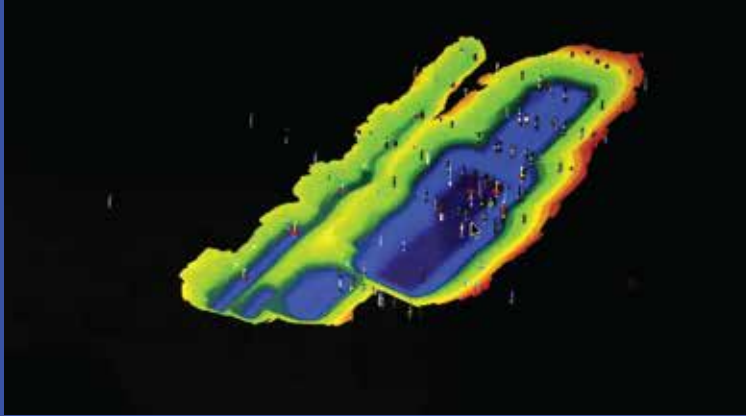


BRITMINDO GROUP

Professional Mining Service

JORC AND KCMi CODES RESOURCES AND RESERVES STATEMENTS





OUR SERVICES

Geological Modelling

A robust geological model is the basis of assessing resources and reserves to international standards. Professional interpretation of geological data is the basis of providing credible models which are used as the basis of resource and reserves assessments.

Britmindo has qualified and experienced engineering geologists who provide accurate interpretations of geological data to provide realistic models which form the basis of resource and reserves assessments.

JORC and KCMI Reporting

The JORC and KCMI Codes set out minimum standards, recommendations and Guidelines for Public Reporting of Exploration Results, Resource and Reserve Assessments. JORC and KCMI Reports are used by stakeholders, investors and financial institutions to gain various levels of confidence in mineral deposit reporting. JORC reports are used in Australasia whilst KCMI Reports are published in Indonesia.

Britmindo provides Resource and Reserves Assessments which are undertaken by experienced consultants under the supervision and responsibility of Competent Persons and are in accordance with both JORC and KCMI requirements.

OUR EXPERTISE

GRANT VAN HEERDEN

MAusIMM
Director
Britmindo Australia Pty. Ltd.



SEAN PELLOW

MAusIMM, Mining Eng., MIQ
Technical Advisor



HANI ADI GRAHA

MAusIMM, CPI-IAGI
Senior Engineering Geologist



LA ODE SAPTA AKHIRUDIN

MAusIMM, CPI-IAGI
Senior Engineering Geologist



RULY FRANS SATRIO

MAusIMM
Senior Mining Engineer

