

OUR CLIENTS

- ANZ Bank
- Arch Coal Inc.
- Barclays Capital
- BNP-Paribas
- CIMB Niaga (Indonesia)
- Cue Energy
- GDF Suez Energy
- Gegah Optima Resources Sdn Bhd
- GS Global Corp
- HSBC Singapore
- Indonesia Eximbank
- Itochu Corporation (Japan)
- JAPAN Coal Energy Center
- JP Morgan Singapore
- JX Nippon Oil and Energy Corporation (Japan)
- LG Corporation
- Macquarie Bank (Singapore)
- Pembroke Resources
- Price Waterhouse Coopers
- PT Astra International
- PT BHP Billiton (Coal)
- PT BHP Billiton (Nickel)
- PT Golden Energy Mines
- PT Harum Energy
- PT J Resources Nusantara (Gold)
- PT Kaltim Prima Coal
- PT Leighton Contractors Indonesia
- PT Multi Harapan Utama
- PT Paiton Energy
- PT Pama Persada Nusantara
- PT Petrosea Tbk
- PT Pinang Coal (Noble Group)
- PT Reswara Minergi Hartama
- PT Santan Batubara
- PT Saptaindra Sejati
- PT Telen Orbit Prima
- PT Trubaindo (Banpu)
- PT Tunas Inti Abadi
- PT United Tractors
- Qatar National Bank Kesawan
- Reliance Energy (India)
- Rothschild
- Sojitz Corporation (Japan)
- Standard Chartered Bank
- Sumitomo Corporation (Japan)
- Titan Mining Group
- Trafigura
- Videocon Industries (India)
- White Energy



BRITMINDO GROUP

Professional Mining Services

www.britmindo.com

JAKARTA

Graha Britmindo

Jl. Taman Margasatwa Raya No. 14, Ragunan

Jakarta Selatan 12550, Indonesia

Tel. +62 21 7884 9999 (hunting)

Fax. +62 21 7884 9998

Email: bm_jakarta@britmindo.com

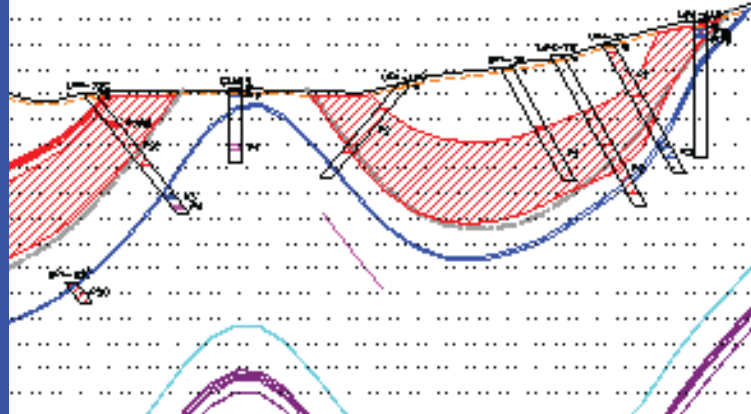


BRITMINDO GROUP

Professional Mining Service

TECHNICAL STUDIES





OUR EXPERTISE

GRANT VAN HEERDEN

MAusIMM

Director

Britmindo Australia Pty. Ltd.



SEAN PELLOW

MAusIMM, Mining Eng., MIQ

Technical Advisor



PRAMA GUSTONO

Director



HANI ADI GRAHA

MAusIMM, CPI-IAGI

Senior Engineering Geologist



RULY FRANS SATRIO

MAusIMM

Senior Mining Engineer



OUR SERVICES

Britmindo provides Feasibility Studies, Technical and Financial Due Diligence and Technical Audits for both local and international entities such as Coal Mine Owners, Mining Contractors, Investors, Financial Institutions and Mining Industry Service Providers.

Such studies can comprise either Pre Feasibility, Feasibility or Bankable Feasibility studies to whatever level of confidence as is required in respect of JORC Code 2012 Edition: major or limited Due Diligence of coal mineral deposits; reviews of previously published reports in respect of stated Resources and Reserves, operating mine audits, production studies, financial reviews, operating mine audits, operating and capital cost reviews, logistical and transportation studies.

Whatever the requirements, Britmindo can tailor the study to suit the Client's objectives and expectations with clearly stated outcomes.

"Quality is never an accident; it is always the result of high intention, sincere effort, intelligent direction and skillful execution; it represents the wise choice of many alternatives." - Willa A Foster

